


## CASE STUDY



### SAN DIEGO, CALIFORNIA

<b>ARCHITECT</b>	AVRP STUDIOS
<b>FABRICATOR</b>	CALIFORNIA PANEL SYSTEMS
<b>INSTALLER</b>	EHMCKE SHEET METAL
<b>FIXING SYSTEM</b>	TS110 VISIBLE (EXPOSED) FIXING WITH SCREWS ON AN ALUMINUM SUBFRAME
<b>MARKET SEGMENT</b>	MULTI HOUSING, APARTMENTS
<b>BUILD TYPE</b>	NEW CONSTRUCTION
<b>USE</b>	FAÇADES
<b>YEAR</b>	2013

<b>TRESPA PRODUCT</b>	TRESPA® METEON® UNI COLORS
	
<b>FINISH</b>	SATIN



Think Trespa

TRESPA®

## ARIEL SUITES

# SLEEK, EXTERIOR CLADDING MATERIAL PROVIDES RENTAL UNIT WITH A LUXURY FEELING THAT LASTS

LOCATED IN SAN DIEGO'S LITTLE ITALY DISTRICT, ARIEL LUXURY RENTALS ARE CONVENIENTLY SITUATED JUST STEPS FROM THE HARBOR AND DOWNTOWN. THE BAY AREA'S HIGH PEDESTRIAN TRAFFIC AND DEMAND FOR CHIC STYLE CREATED A UNIQUE DESIGN CHALLENGE FOR AVRP STUDIOS.

With the new multi-family high-rise structure completed in 2013, Ariel Luxury Rentals has much to offer for city dwellers. Architectural firm AVRP Studios designed the 25-story building with custom amenities such as a barbecue deck, fitness center, rooftop pool and underground parking for tenants to enjoy at any time of year. All 224 units include high-end amenities,

floor to ceiling windows, balconies and a beautiful open floor plan. The building also offers 18,000 square feet of retail opportunity on the ground floor and five levels of resident and visitor parking. And to provide a long-lasting exterior facade that looks great, AVRP Studios chose to use Trespa® Meteon®.



### MAXIMUM DURABILITY FOR EVERY LOCATION

The aesthetic appeal of Trespa® Meteon® was not the only reason why Trespa® panels were chosen as a cladding material for Ariel Luxury Rentals. Building maintenance is always a key factor to consider in new construction. How well will the materials chosen withstand the test of time and exposure to the natural elements? Will the building's exterior be easy to clean? Located in a high traffic area on the San Diego Bay, the building needed to be able to stand up to everyday wear and tear – Trespa® Meteon® offered just that. Low

maintenance and high-impact resistance are its inherent product qualities, making it an excellent choice for use in a center city space exposed to high amounts of pedestrian traffic and changing climate. The closed surface of Trespa® Meteon® panels practically withstand dirt accumulation and the salt air coming off the bay, keeping the product smooth, and easy to clean.

### PURE LUXURY INSIDE AND OUT

Developing a luxurious rental unit for San Diego's fashion-forward dwellers with a taste for posh design required an exterior that was every bit as lavish as the interior. In order to

**Think Trespa**



“ We wanted to use the Trespa® Meteoron® panels on the Ariel Suites project because of the product’s high-end quality. The aesthetic is so clean and the panels are extremely durable. Of course, the vast choice of colors Trespa offers is very appealing and I like that the panels are low-maintenance. Choosing a low-maintenance exterior cladding product for an area with heavy exposure to human traffic was especially critical.”

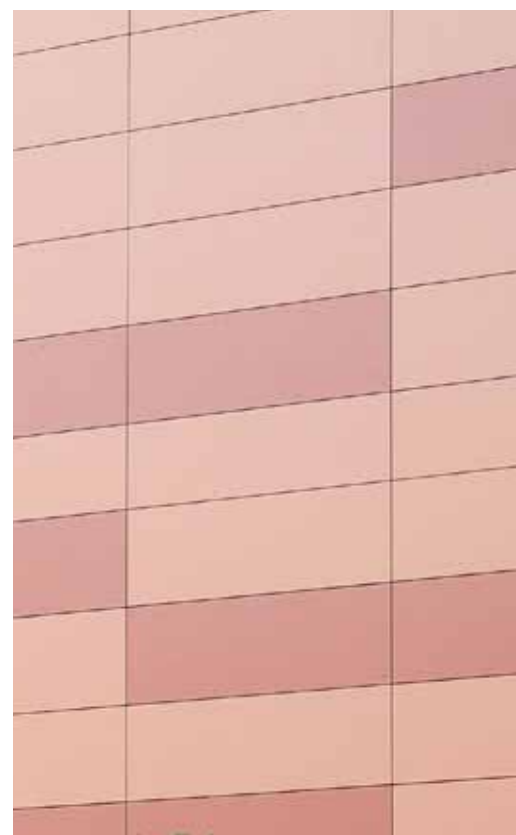
– Pablo Collin, Project Manager, AVR Studio

give the units lasting distinction, the firm desired an exterior cladding material with a clean, modern aesthetic that, in addition to its high durability and ease of cleaning was able to set the building apart from the glass and steel surrounding structures.

By installing durable and beautiful Trespa® Meteoron® high-quality panels, AVR Studio was able to create a multi-family unit with a luxurious aesthetic that will appeal to design savvy, San Diego renters. Featuring two different colors of Trespa® Meteoron®,

English Red and Terra Cotta, the building offers a neat and unique look distinguishing the building amongst the prevailing aesthetic of surrounding, rather monotonous architecture.

Thanks to AVR Studio's decision to choose Trespa®, residents of Ariel Suites can expect the same exterior beauty and contemporary design they appreciated at the grand opening for years to come. ■



TRESPA®

## CONTACT US

### TRESPA INTERNATIONAL B.V.

P.O. Box 110, 6000 AC Weert  
Wetering 20, 6002 SM Weert  
The Netherlands  
www.trespa.com

### CUSTOMER SERVICE DESK

#### EMEA EXPORT

Tel: +31 (0) 495 458 839  
Info.Export@Trespa.com

#### TRESPA UK LTD.

35 Calthorpe Road  
Edgbaston  
Birmingham, B15 1TS  
United Kingdom  
Tel: 0808-2340268  
Info.UK@Trespa.com

### TRESPA NORTH AMERICA LTD.

350 Fifth Avenue, Ste 4610  
New York, NY 10118  
United States of America  
Tel: +1 800 487 3772  
Info.NorthAmerica@Trespa.com

### TRESPA CHINA CO. LTD.

Room 2604-05, HuaiHai Plaza  
No. 1045 HuaiHai Road (central)  
ShangHai 200031  
P.R. China  
Tel: +86 (0) 21 6288 1299  
Info.China@Trespa.com

### CUSTOMER SERVICE DESK ASIA/PACIFIC

Tel: +86 (0) 21 5465 8388  
Info.APAC@Trespa.com

## VISIT US

### TRESPA DESIGN CENTRE WEERT

Wetering 20  
6002 SM Weert  
The Netherlands  
Tel: +31 (0) 495 458 845  
TDC.Weert@Trespa.com  
www.trespa.com/tdc

### TRESPA DESIGN CENTRE BARCELONA

Calle Ribera 5,  
08003 Barcelona  
Spain  
Tel: +34 (0) 93 295 4193  
TDC.Barcelona@Trespa.com  
www.trespa.com/tdc

### TRESPA DESIGN CENTRE SANTIAGO

Eliodoro Yáñez 2831  
Torre A - Local 1  
Providencia, Santiago  
Chile  
Tel: +56 2 4069990  
TDC.Santiago@Trespa.com  
www.trespa.com/tdc

## FOLLOW US



## DISCLAIMER

### GENERAL

These terms apply to the use of this document and such use automatically means that the other party agrees to these terms. The information provided by Trespa International B.V. ("Trespa") in this document is solely indicative. Trespa is unable to warrant the accuracy and completeness of this information. Trespa may change the information included in this document at any time and without further notice. Trespa's customers and third parties must ascertain that they have the most recent document (for the most recent version, please consult: www.trespa.com). No rights can be derived from the information provided; the use of the information is at the other party's risk and responsibility. Trespa does not warrant that the information in this document is suitable for the purpose for which it is consulted by the other party. This document does not contain any design, structural calculation, estimate or other warranty or representation that customers and third parties may rely on. This document does not guarantee any properties of Trespa products. Colours used in Trespa's communications (including but not limited to printed matter) and in samples of Trespa's products may differ from the colours of the Trespa products to be supplied. Samples are not intended for use in product tests and are not representative of characteristics of the Trespa

products. Trespa's products and samples are produced within the specified colour tolerances and the colours (of production batches) may differ, even if the same colour is used. The viewing angle also influences the colour perception. Metallics panels feature a surface whose colour appears to change based on the direction from which it is viewed. The specified colour stability and colour specifications relate only to the decorative surface of the Trespa products, not to the core material and samples of the Trespa products. Trespa products are delivered ex-works with straight, sawn sides. Customers and third parties must have a professional adviser inform them about (the suitability of) the Trespa products for all desired applications and about applicable laws and regulations. Trespa does not warrant the above. The most recent version of the current delivery programme and the Material Properties Datasheet can be found at www.trespa.info. Only the information in the most recent and valid Material Property Datasheet should be used to select and provide advice regarding Trespa products. Trespa reserves the right to change (the specifications for) its products without prior notice.

### LIABILITY

Trespa is not liable (neither contractual nor non-contractual) for any damage arising from or

related to the use of this document, except if and to the extent that such damage is the result of wilful misconduct or gross negligence on the part of Trespa and/or its management. The limitation of liability applies to all parties affiliated with Trespa, including but not limited to its officers, directors, employees, affiliated enterprises, suppliers, distributors, agents, and representatives.

### GENERAL CONDITIONS

All oral and written statements, offers, quotations, sales, supplies, deliveries and/or agreements and all related activities of Trespa are governed by the Trespa General Terms and Conditions of Sale (*Algemene verkoopvoorwaarden Trespa International B.V.*) filed with the Chamber of Commerce and Industry for Noord- en Midden-Limburg in Venlo (NL) on February 20th, 2015 under number 24270677, which can be found on and downloaded from the Trespa website, www.trespa.com/documentation. All oral and written statements, offers, quotations, sales, supplies, deliveries and/or agreements and all related work of Trespa North America, Ltd. are governed by the Trespa North America General Terms and Conditions of Sale, which can be found on and downloaded from the Trespa website, www.trespa.com/documentation. A copy of these general conditions of sale will be provided free of

charge on request. All general terms and conditions other than the conditions mentioned above are dismissed and do not apply, regardless of whether such terms and conditions are referred to on requests for offers, offer confirmations, stationery and/or other documents of the other party, even if Trespa does not expressly object to such terms and conditions.

### INTELLECTUAL PROPERTY

All intellectual property rights and other rights regarding the content of this document (including logos, text and photographs) are owned by Trespa and/or its licensors. Any use of the content of this document, including distribution, reproduction, disclosure, storage in an automated data file or the dispatch of such a file without Trespa's prior written consent is explicitly prohibited. \* Trespa, Meteon, Athlon, TopLab, TopLab<sup>PLUS</sup>, TopLab<sup>ECO-FIBRE</sup>, TopLab<sup>VERTICAL</sup>, TopLab<sup>BASE</sup>, Virtuon, Izeon, Pura NFC, Volkern, Trespa Essentials and Mystic Metallics are registered trademarks of Trespa.

### QUESTIONS

Should you have any questions or comments, please do not hesitate to contact Trespa.

VERSION 2.1 ■ BROCHURE CODE V7017 ■ DATE 12-2017



VISIT [TRESPA.COM](http://TRESPA.COM) FOR THE MOST  
UP TO DATE VERSION OF THIS DOCUMENT.

# TRESPA®